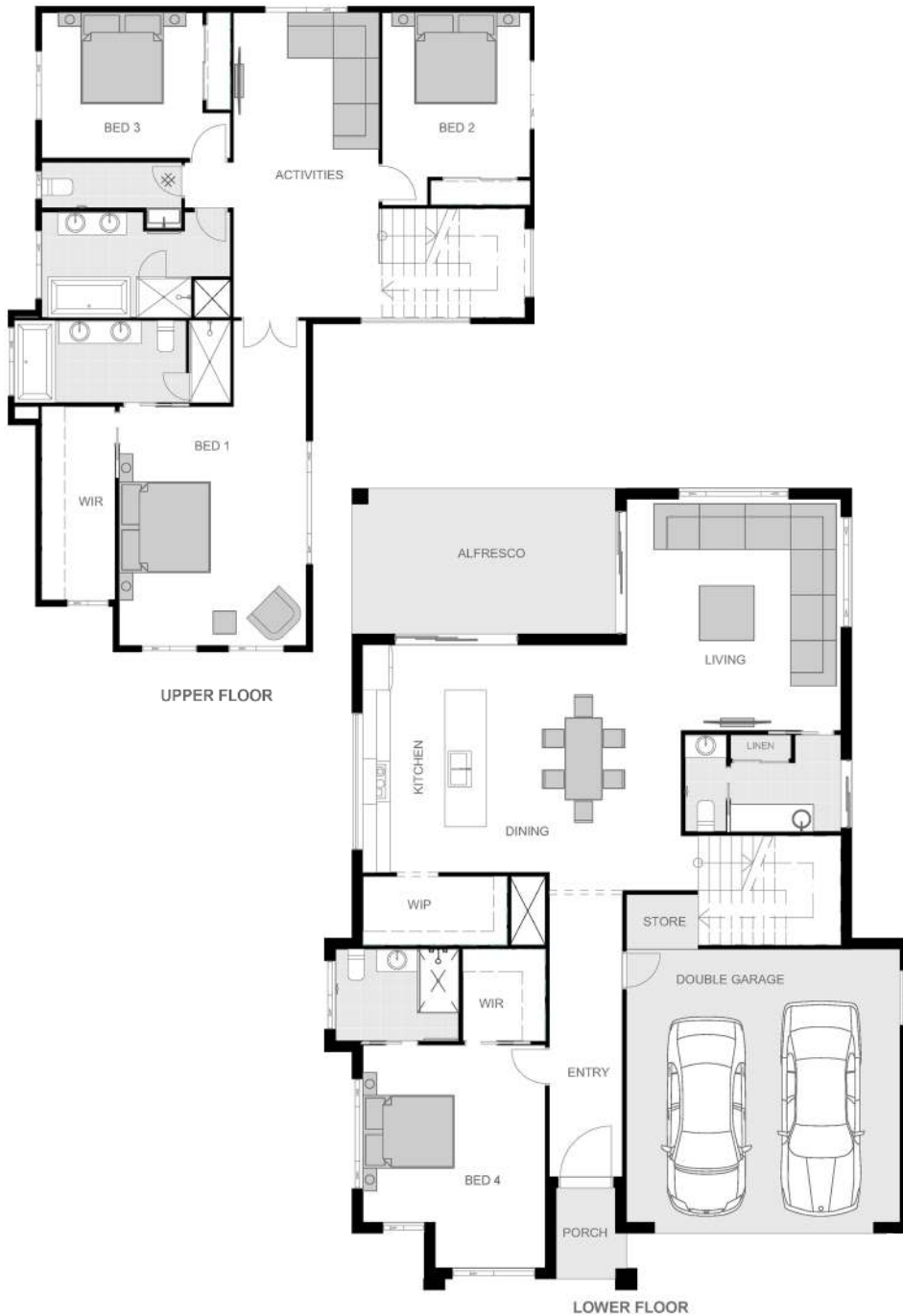


# Mimosa



SUITS BLOCKS  
14.7m+ WIDE



## Bedrooms

|        |           |
|--------|-----------|
| Master | 4.1 x 5.2 |
| Bed 2  | 3.2 x 3.6 |
| Bed 3  | 3.5 x 3.2 |
| Bed 4  | 4.0 x 4.9 |

## Living areas

|             |           |
|-------------|-----------|
| Living room | 4.7 x 5.1 |
| Dining room | 4.3 x 5.0 |
| Activities  | 3.2 x 6.7 |

## Outdoor

|          |           |
|----------|-----------|
| Alfresco | 5.8 x 3.2 |
|----------|-----------|

## Garage

|        |           |
|--------|-----------|
| Garage | 6.0 x 6.0 |
|--------|-----------|

## Floor area

|       |                              |
|-------|------------------------------|
| Total | 311.9m <sup>2</sup> / 33.7sq |
|-------|------------------------------|

## Exterior dimensions

|        |      |
|--------|------|
| Length | 17.4 |
| Width  | 12.9 |

Note: Images for illustrative purposes only. Floor plans may change based upon your facade.  
All measurements are approximate. © Plans are protected by copyright.  
ABN: 39103131031 LIC: 198226c QSC Lic: 50186S

VAUGHAN  
HOMES

"Your local builder"

02 6581 3095  
info@vaughanhomes.com.au  
www.vaughanhomes.com.au

# Entertainer range

Two-storey homes

Facades



Urban facade



Tropical facade



Coastal facade



Modern facade



**VAUGHAN  
HOMES**

*"Your local builder"*

Note: Images for illustrative purposes only. Facades may change based upon your floorplan.  
All measurements are approximate. © Plans are protected by copyright.  
ABN: 39103131031 LIC: 198226c QSC Lic: 50186S

**02 6581 3095**  
**info@vaughanhomes.com.au**  
**www.vaughanhomes.com.au**